

OTW

January 2023

One Team Wessex
brings people together.



Welcome



Isayas Tecleberhan

Framework Director

All

Welcome to our first quarterly newsletter which sets out to share key updates and lookaheads. It’s fantastic to be able to showcase some of our collective highlights and challenges from the last quarter.

Safety is paramount to everything we do, and I believe we can achieve our ambition of being 100% safe whereby everyone impacted by our activities goes “home safe, every time”.

Looking back at the last couple of periods, we have continued to achieve the Close Call ratio target on the framework of 1 in 300hrs worked. This is testament to the open reporting culture we have in OTW.

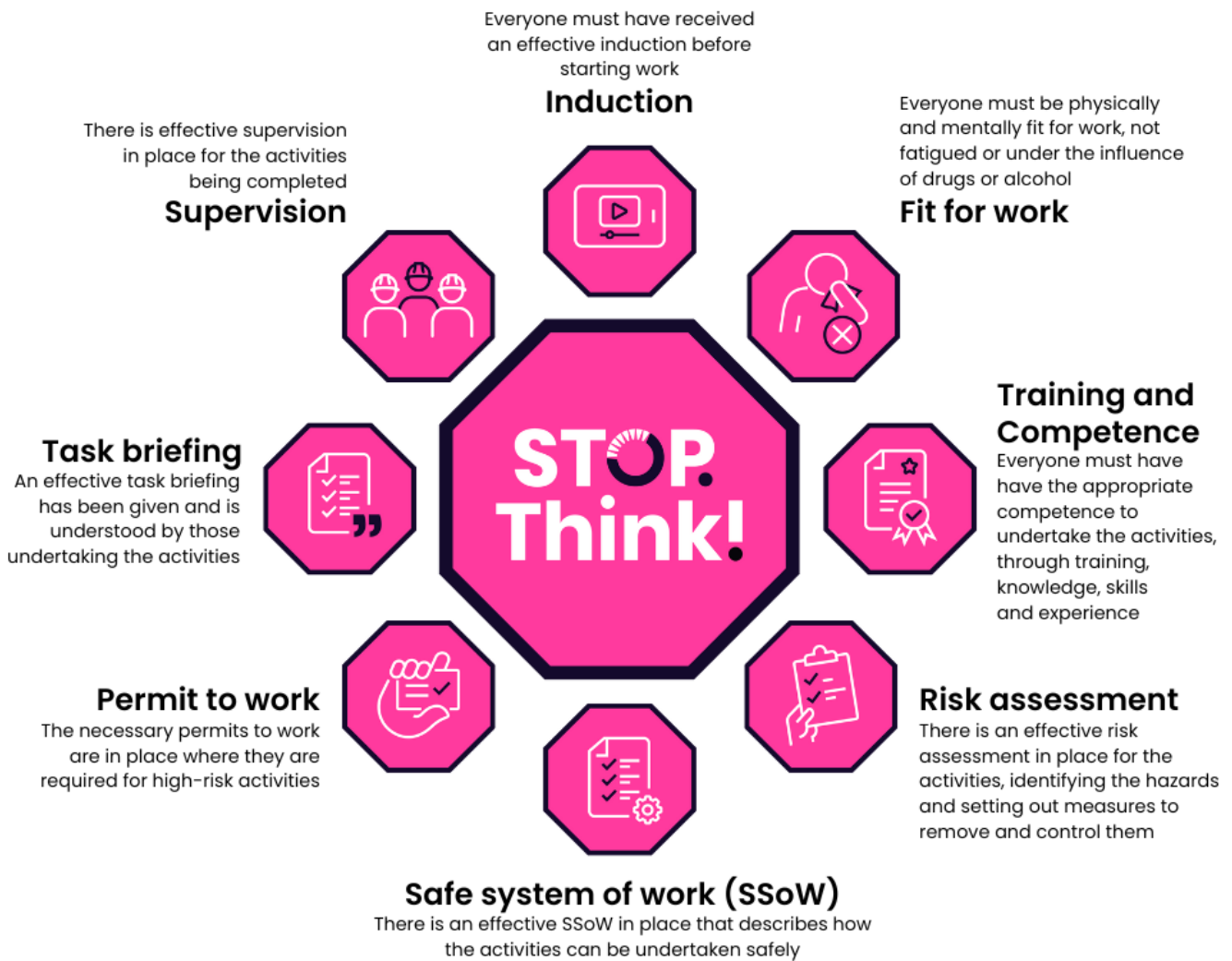
Having an open reporting culture and continuously embedding an ethos of continuous improvement is absolute gold to any business. As part of our Octavius safety improvement plan and to further enhance our Health and Safety performance, in October 2022 we have launched our STOPThink! Fundamentals. These are the 8 key ingredients that we believe are essential for assured and safe delivery across our business.



What is One Team Wessex?

One Team Wessex (OTW) is the collaborative relationship between Network Rail and Octavius Infrastructure. Together we deliver infrastructure enhancements and renewals in the Wessex route to provide a reliable and modern railway for the traveling public. We cover some of the busiest areas of London including south west, from London Waterloo to the south and west of England.





We have an increased workbank to deliver this year in the both the Renewals and Enhancements portfolios. We also have increased blockades and possessions heavily skewed towards the last quarters of Year 5. Both Octavius and Network Rail CD continue to bolster the resources to manage the increased volume of work, specifically the Geotech portfolio.

It is great to see the finished photos of Surbiton and have it open to the public.

In February, we will be commissioning Ashurst sub-station to achieve the E&P volumes this year. Our E&P team rapid response to Hinton Admiral emergency, in collaboration with other suppliers and Network Rail is an example of true partnership at heart and in the spirit of the CP7 mindset, whilst our Geotech teams

are continuing to deal with rapid response at Bugley Bridge as well as stabilising Honiton following significant incidents.

The next few periods also see us into a significant mobilisation phase, where many of portfolio's will be setting up more sites (Waterloo, AFA's and more Geotech sites), undertaking thorough reviews of our plans and forecasts for both volumes/milestones and financial forecasting as we embark into RF13 and set baseline for Year 5 delivery.

I look forward to sharing a successful journey with you all; if you have any questions or ideas, please do reach out to me.

Thanks
Isayas

OTW Collaboration



Zen Nichols

Senior Programme Manager

One thing I like most about working in One Team Wessex is the can-do attitude when we're asked to help with a problem. Like the recent emergency transformer response at Hinton Admiral, near Christchurch; where a traction power transformer failed leaving the Wessex Route with severe train delays. The transformer had been commissioned in 1966 and spare parts weren't available.



One of Network Rail's other supply partners, Lowery, are scheduled to replace the transformer later this year, but the new kit wasn't manufactured yet. The Network Rail engineering team then pointed out that a very similar transformer had just been decommissioned by One Team Wessex at Winchfield. It was sitting by the side of the railway waiting to be taken away. In a hastily convened Teams meeting with project managers, engineers and planners from NR, Octavius and Lowery, a plan was hatched – OTW would lift out the disused transformer, hand it over to Lowery and they would install and commission it with support from NR's own engineering and maintenance teams.

A quick call to Paul Welch, Package Manager and things started moving – OTW would lift out the Transformer using a Kirow rail mounted crane as soon as access could be arranged.

In record time we had a possession planned, crane booked, safe system of work in place and it was all systems go.

Meanwhile Lowery started preparing the site at Hinton to receive the transformer, laying temporary trackway across a farmer's saturated field, clearing overgrown vegetation and removing the failed transformer.

The Kirow crane lift went without a hitch and the Winchfield transformer was loaded up onto a flatbed lorry and delivered to Lowery at Hinton Admiral. An intensive period of installation testing and commissioning followed, culminating in the transformer being energised 2 weeks after the old one had failed. NR's maintenance team took over to carefully watch whilst the equipment was brought back into service. Trains can now run at full power again, restoring normal service to our customers. Now that's what I call team work!



Triple Gold!

We're delighted that three of our sites have been awarded gold in the Southern region Route Gold supply chain initiative.

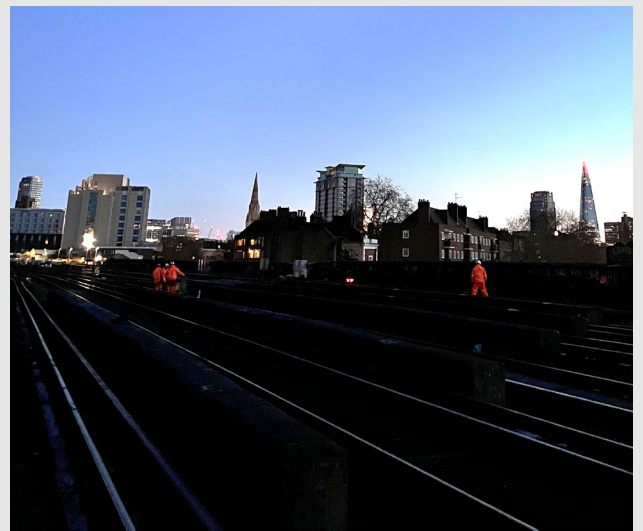
You can find out how the projects achieved gold status throughout the newsletter.

Injury free Christmas



Whilst many of us were celebrating Christmas with our loved ones our teams were out in full force successfully completing steelwork repair preparation works and templating areas for adjacent bridges at Carlisle Lane and Lambeth Road in Waterloo, to schedule and without injury.

Over a 52-hour possession starting on Christmas Eve we completed Hidden Critical Element surveys and steelwork templating at Lambeth Road Bridge in Waterloo. The team had the track access to all eight lines and undistruptive access to the underbridge structure, to identify where repairs are required. Works to deliver the repairs and renew the structure will begin in September this year, over a series of weekend possessions into 2024.



Thank you to all involved for completing all works safely and successfully.

Assured and safe delivery at Surbiton...

We've successfully opened the new podium and stairs for passengers at Surbiton station.

Despite several challenges including unexpected severe weather conditions, the team have worked hard around the clock to maintain to programme.

As part of the £6.7 million congestion relief programme we've installed a new deck for Surbiton station's footbridge to reduce overcrowding and improve passenger safety.

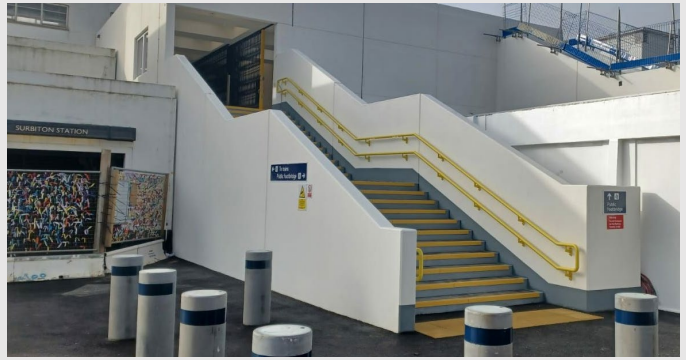
Thank you to everyone involved!

Working together to deliver on time



The team utilised several opportunities during industrial strike action to progress with works, to ensure we deliver on time.

Only due to everyone's commitment to provide a reliable network we have been able to secure and plan the works in a short space of time!

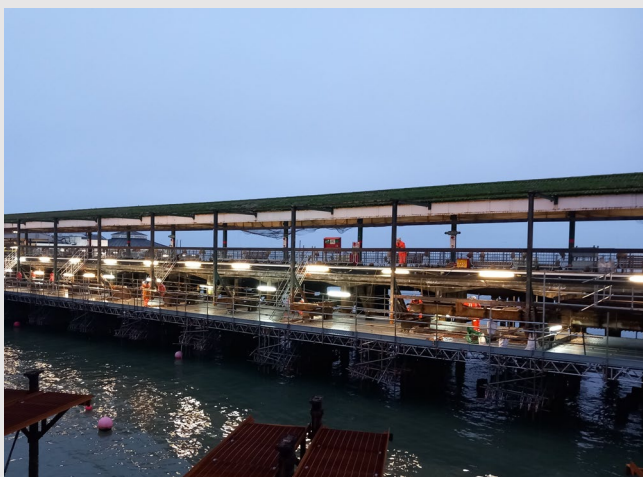
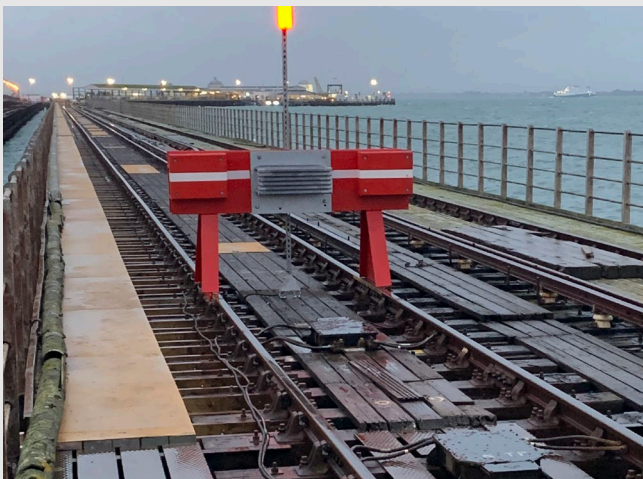


An exciting Ryde

Works at Ryde Pier in Isle of Wight began in October 2022 to strengthen and revitalise the pier, which opened in the 1880s. The vital works refurbishment works will enable trains to travel safely for the next 60 years. We've made great progress so far; completed installing all the scaffolding sections in Zone 4 and the required part of zone 3 of the pier and have completed the track and superstructure removal works. The team is working closely with the Network Rail team to resolve some defects discovered in the existing rail bearers in zone 3, although outside the scope of the original programme is impacting the project.

Despite poor weather and challenging environmental conditions, the team are constantly adapting working methods to manage tides, high winds and high swells.

Thinking differently to manage the difficult environmental challenges in November 2022 the team successfully completed a 52-hour possession to separate the operational railway from Ryde Pier. The line was initially planned to close however, recognising the significant disruption to passengers the team found a more efficient and safer way utilising Network Rail's Standard "Creating a Site of Work Segregated from the Railway" NR/L2/OHS/00130. Installing temporary signalling equipment and a buffer stop at Ryde Esplanade station, allowed the whole pier to become a secure construction site, meaning that we can work safely whilst trains can run to Esplanade station instead of closing the line for a long period of time.



Electrifying the railway



HV Switchgear Ashurst

We have delivered a HV module, annex module, two auxiliary transformers and two signalling power transformers at Ashurst substation in the New Forest.

Working near the New Forest National Park meant we had to think differently to protect the natural environment.

We split the new module in to two parts: a HV module and an annex module, which is a smaller module holding low voltage equipment. This solution maximised the limited space available and avoided using additional land within the protected area.

The modules will provide stable and effective power on the railway line for many years.

The final commissioning will be completed in Q1 2023.



Future proofing the railway with high power

- We've successfully completed many important milestones on the TRU and non-traction switch gear renewals project, replacing life expired equipment across four sites to bring high voltage power into the railway.
- We have entered into service our first site, Sturt Lane substation, where we lifted modules into place in June 2022.
- At Winchfield we've lifted a TRU module, transformer and transformer bund into position using a KIRROW rail mounted crane and will be progressing onto commissioning and entering the new equipment into the operation.
- Works at Fleet substation will begin in Q1 2023.
- At Dundonald Road, Wimbledon we've successfully installed a new single non traction 11KV switchgear, which minimises the risk of power failure for the Network Rail signalling centre and over 25 commercial businesses in the area.

Only through 12 months of collaboratively planning with Network Rail teams and our supply chain we've been able to successfully complete all the works on time and with minimal disruption to the travelling public and the local residents.



Strong and stable at Leatherhead

After four months on site; starting in September 2022, all critical stabilisation works have now been completed. The work will prevent historical failures and will greatly enhance reliability on the network for travelling public.

We've installed a sheet pile wall along the toe of the embankment to prevent the land slipping and destabilising the track. The slope behind the new sheet pile wall regraded, installed drainage along the toe of the slope and new boundary fence. All delivered safely to schedule and with minimal impact to the lineside neighbours who us some great feedback as they were particularly pleased with regular updates they were given of the works.

As Network Rail and Octavius were committed to looking after the planet and creating a sustainable legacy throughout the project the team not only utilised leftover sheet piles from a previous project. They also donated spare haul road material to a model train station opposite the site.



Tolworth received gold status.



Lighting up the railway

We've made great progress on re wiring, relighting, carriage washer refurbishment and depot protection works across various locations (Package E and A). The new lighting system in particular, called SMART Scan, and the new LED lighting throughout stations will provide a safer and more secure environment for passengers to travel around. As the lights will automatically dim and turn on; saving energy and avoid distributing the local neighbours.

We're already completed planned depot protection works at Wimbledon. At Salisbury we've installed a new carriage washer and completed upgrading the carriage washer at Farnham and completed a new washer at Clapham. We'll be returning to the last three sites later this year to complete additional works.

On the re-wiring and re-lighting package programme we've achieved all milestones at Worplesdon, Esher and on track to complete at our gold site Tolworth, Addlestone station and Fulwell in Q1.

During the programme of works we've developed excellent relationships with station staff and collaboratively agreed to complete other additional works outside of the programme.

Creating a sustainable legacy



Social value we delivered in 2022



Six Trainee Engineers provided with summer placements across the framework.



£4.9m in Social Value generating by spending with SMEs.



152 people hours spent protecting and improving the environment.



£23.6m in Social Value added through spend with local suppliers.

More than a 'Fleeting' visit

Members of One Team Wessex Electrification and Plant (E&P) team joined forces with Sunville Rail Limited to spend a day clearing vegetation including cutting gorse and shrub around walkways for the Fleet Pond Wildlife Reserve.

As the team have developed great collaborative relationships with Fleet Pond Wildlife, they have allowed us to set up a compound on their land for the upcoming works on the railway line; providing safe and immediate access to the work area and minimal track access.

Thank you to everyone who volunteered!



Inspiring the next generation



Chris Bates is continuing to make regular visits to local schools to support with careers events. He supported Crookhorn college with their mock interview day, helping prepare Year 11 students for life after school and visited the Charter Academy, just around the corner from the recently refurbished Landport Viaduct, with a business speed networking event. Aimed at introducing Year 9 students to a wide range of careers.

Caring about our people



Some of our Octavius colleagues had an enlightening day at the Network Rail Southern Race Equality conference; helping everyone to understand where we can improve to provide a respectful and inclusive environment for all across the industry.

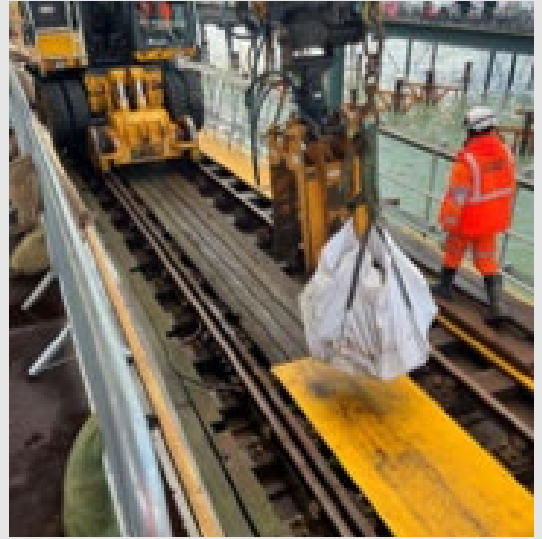
“

It is important that as an industry we recognise that we have a long way to go to provide opportunities and parity for people from ethnic minority groups and backgrounds. The event was interesting, sobering and enlightening with an array of talent present and energetic discussion. I came away with the reflection that it is incumbent on us all to embrace different perspectives if we are to grow as individuals or as an industry and that by being inspiring and supportive leaders, who are empathetic, kind and genuinely want to take the necessary steps to be inclusive, we can improve the opportunities for all.

”

Cat Cliffe, People and Sustainability Director, Octavius Infrastructure.

Protecting our planet



Due to the environmental and ecological sensitivity at Ryde Pier, the project requires a Marine Management Organisation (MMO) License, which was granted early last year. To ensure we're meeting requirements of the license the Marine Management Organisation (MMO) successfully completed a site inspection and site tour.

The MMO were delighted with the teams support throughout the inspection.

“we were very happy with the works that were being undertaken, thank you for the supporting evidence this will be added to the report”.

Well done Majid Nassiri, Ross Smith and the rest of the site team on an excellent result!

At one with nature

Well done to the members of One Team Wessex who braved the heavy rain to offer their invaluable time to the Horsell Common Preservation Society (HCPS).

Thirteen people from Octavius and Network Rail joined forces to remove pine and silver birch saplings to help protect habitat for birds and maintenance of the heath.



Look out for invites to our new environmental bitesize sessions.

Meet the Octavius Sustainability team



Cat Cliffe

People and Sustainability Director
Catriona.Cliffe@octaviusinfrastructure.co.uk



Zach Pears

Environmental Advisor
Zach.Pears@octaviusinfrastructure.co.uk



Chris Grimes

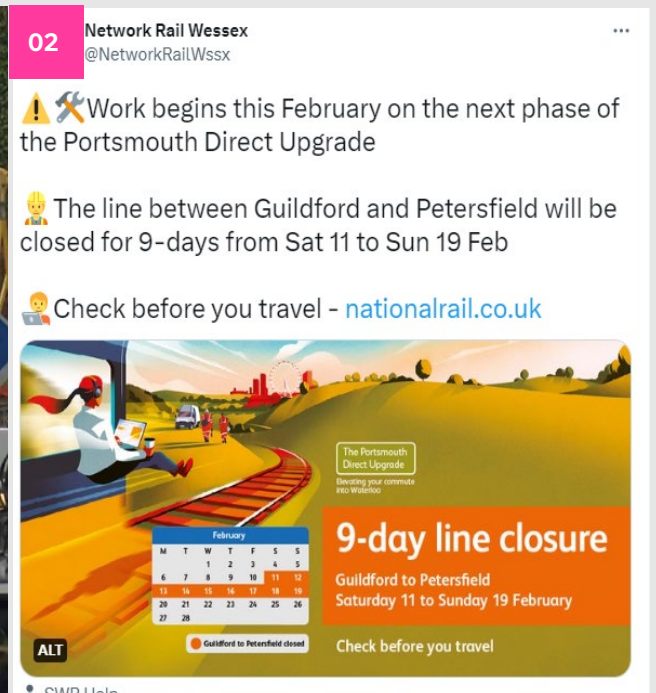
Head of Environment
Chris.Grimes@octaviusinfrastructure.co.uk



Chris Bates

Social Value and Sustainability Advisor
Chris.Bates@octaviusinfrastructure.co.uk

Social media spotlight



Social Media Captions

01. Farncombe to Petersfield signalling blockade – ITV News.

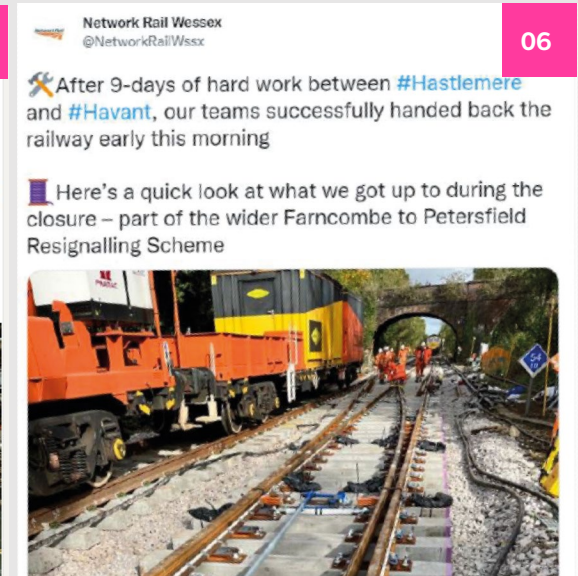
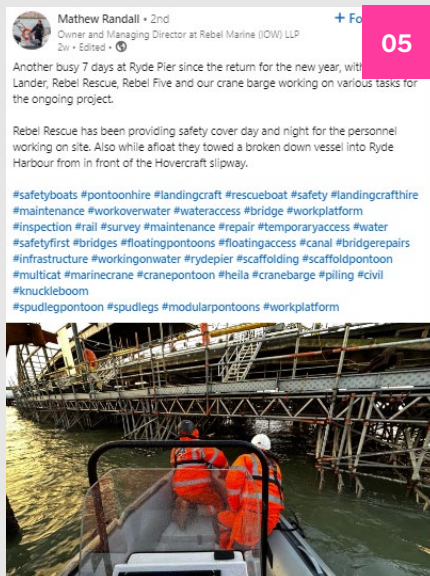
02. Guildford to Petersfield blockade – Twitter.

03. Employability support – EBP South Twitter.

04. Clapham Junction improvement programme – Twitter

05. Ryde Pier – Owner of Rebel Marine, LinkedIn.

06. Farncombe to Petersfield blockade – Twitter



What's next?

January – March 2023



- We're delighted to have been awarded the Waterloo Station Concourse and Porte Cochere Roof renewal GRIP 6-8 contract. We'll be replacing the existing roof glazing system over the concourse and Porte Cocheres outside the front of the station building offices and over the approach road.
- **Complete Surbiton Station Congestion Relief programme**
- **Waterloo Ticket Office re-location**
Progress with developing design works for new ticket office and associated areas.
- **Wandsworth Town Access for all (AFA) and second entrance project - Complete** surveys and detailed design of new lifts that connect to existing subway and a new second entrance.
- **Complete final commissioning at Ashurst.**
- **Progress with CP7 E&P early development and design works.**
- **Farncombe to Petersfield programme** - Nine day blockade to complete civils works as part of the ongoing re-signalling programme between Shalford to Petersfield.

April – July 2023

- **Ryde Pier** - Re-open the railway and finish replacing the track and super structure.
- **AFA – Isleworth, Barnes, Motspur Park and Stoneleigh**
Complete designs of new lifts and footbridges at all stations and begin on site until 2024.
- **Clapham Junction** - Progress with congestion relief scheme to remodel the Brighton Yard entrance, widen the existing gate lines to increase passenger flow and replace stairs on platform 13/14 during Q1. Complete blockade in during Easter period to Install staircase.

If you have any feedback or if you would like to contribute to the next issue please contact: anjni.thakrar@octaviusinfrastructure.co.uk